

# Calf Enhancer

## MEDICATED

For the prevention and control of coccidiosis caused by *Eimeria bovis* and *Eimeria zuernii*.

### ACTIVE DRUG INGREDIENT

Monensin (as Monensin sodium) ..... 1,920 mg./lb. (120 mg/oz)

### GUARANTEED ANALYSIS

Total Microbial Count... 48 billion CFUs/lb. (3 billion CFU/oz.)

(*Lactobacillus acidophilus*, *Bifidobacterium bifidum*, *Bacillus licheniformis*, *Bacillus subtilis*, *Lactobacillus lactis*)

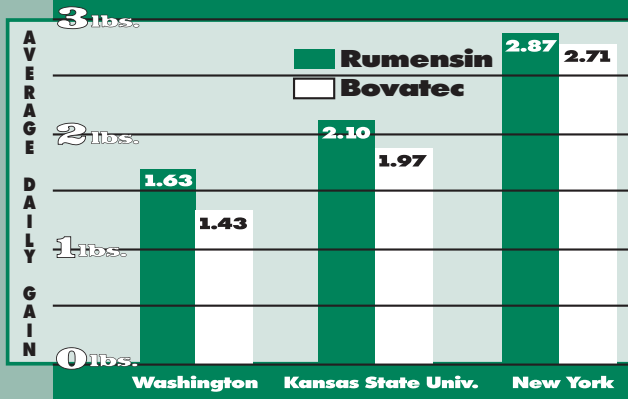
Calf Enhancer combines direct fed microbials with Rumensin® (monensin), an early acting coccidiocide, to optimize calf health.

Research at the University of Wisconsin found that direct fed microbials used in Calf Enhancer improved starter feed intake, feed efficiency and total gain and lowered incidence of scours in calves.

Rumensin works because it destroys both *Eimeria bovis* and *Eimeria zuernii* before they can begin sexual reproduction. When calves are started on Rumensin early, they are less likely to be infected by animals that are spreading oocysts. As a result, calves are healthier.

## RUMENSIN ADVANTAGE

RUMENSIN SHOWN SUPERIOR TO BOVATEC IN HEAD-TO-HEAD TRIALS



3 Trials

## Mixing Directions For Group Feeding

Mix thoroughly 1 to 4 pounds of Calf Enhancer with 47 to 44 pounds of unmedicated calf feed to make 48 pounds of a medicated feed containing 40 to 160 mg/lb of monensin as indicated below.

Desired Monensin Level in Medicated Feed	Pounds of Calf Enhancer to Make 48 pounds of Medicated Feed	Feeding Level of Medicated Feed	Monensin Dose
mg/lb	lb	lb/hd/day	mg/hd/day
160	4	.25 - 1	40-160
80	2	.5 - 2.5	40-200
40	1	1 - 5	40-200

## Mixing Directions For Individual Feeding

Mix thoroughly 1/3 to 11/3 ounce (1 to 4 scoops) of Calf Enhancer with 0.5 to 3 pounds of unmedicated calf feed to make a medicated feed containing 20 to 160/mg/lb of monensin as indicated below.

Desired Amount of Monensin Intake	Amount of Calf Enhancer Needed	Pounds of Unmedicated Feed to mix with Calf Enhancer	Monensin Level in Medicated Feed
mg/hd/day	ounces (scoops)/day	lb	mg/lb
40	1/3 (1 scoop)	0.5	80
		1	40
		2	20
80	2/3 (2 scoops)	0.5	160
		1	80
		2	40
120	1 (3 scoops)	1	120
		2	60
		3	40

## Feeding Directions

Adjust feeding rate according to body weight in order to provide 0.14 - 1.00 mg of Monensin per pound of bodyweight per day depending on the severity of challenge up to a maximum of 200 mg of monensin per head per day. Preferred dosage for calves under 300 pounds is 80 - 100 mg. Calves over 300 pounds should receive 0.3 mg per pound of bodyweight.

## Ingredients

Dried whey, dried *L. acidophilus* fermentation product, dried *B. bifidum* fermentation product, dried *B. licheniformis* fermentation product, dried *B. subtilis* fermentation product, dried *L. lactis* fermentation product, flavor, sodium silico aluminate, sunflower oil.

## Storage

Store in a cool dry place. Keep container tightly closed when not in use.

## Packaging

Calf Enhancer is available in a convenient 8 lb. container with a handle and a wide-mouth screw-on lid or in a 25 lb. pail. One pound of Calf Enhancer will feed one calf for approximately 24 days.

## WARNING:

A withdrawal period has not been established for monensin in pre-ruminating calves. Do not feed to calves to be processed for veal.

## CAUTION:

Do not allow horses or other equines access to formulations containing Monensin. Ingestion of Monensin by equines has been fatal. Monensin medicated cattle feed is safe for use in cattle only. Consumption by unapproved species may result in toxic reactions. Feeding undiluted or mixing errors resulting in high concentrations of Monensin has been fatal to cattle and could be fatal to goats. Must be thoroughly mixed in feeds before use. Do not feed undiluted. Do not feed to lactating dairy cows

*for More Information Contact:*

**Advanced Agri Solutions LLC**

**Box 56, Stevens, PA 17578**

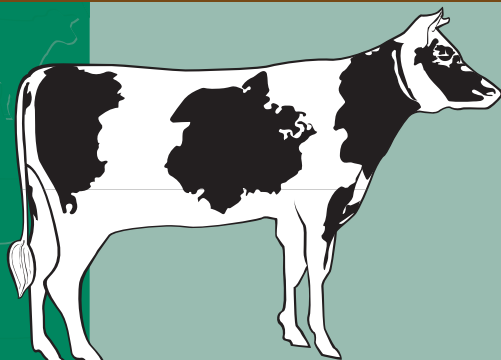
**1-800-650-1365**

**[www.advancedagri.com](http://www.advancedagri.com)**

*to Order Call AAS or Call:*



**advanced  
agri  
solutions LLC**



# CALF ENHANCER



**Rumensin For  
Coccidiosis Protection**

**Direct Fed Microbials For  
Preventive Health Care**

**Promotes Thrifty,  
Efficient Growth**

**Convenient And Versatile  
For All Ages**